

MICROZONAZIONE SISMICA

Livello 1

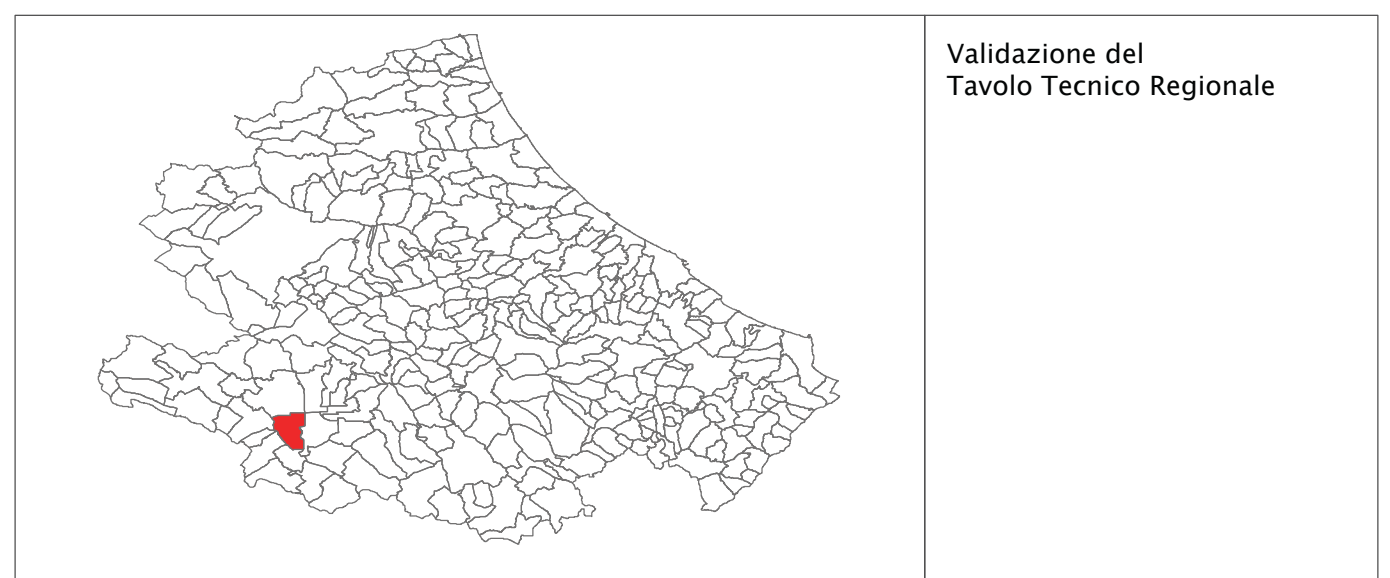
Carta delle Microzone Omogenee in Prospettiva
Sismica e delle Frequenze di Risonanza
TAV. 2 (Frazione Petogna)

SCALA 1:5.000

Basi topografiche: CTR 1:5.000 fornite dal Servizio Cartografico della Regione Abruzzo - Sistema di Riferimento Geografico WGS 1984 Euro 19N

REGIONE ABRUZZO

Comune di Luco dei Marsi (AQ)



Validazione del
Tavolo Tecnico Regionale

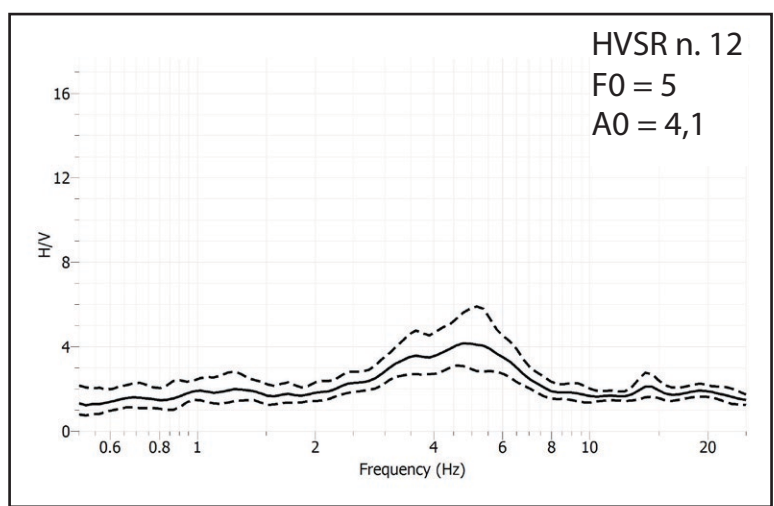
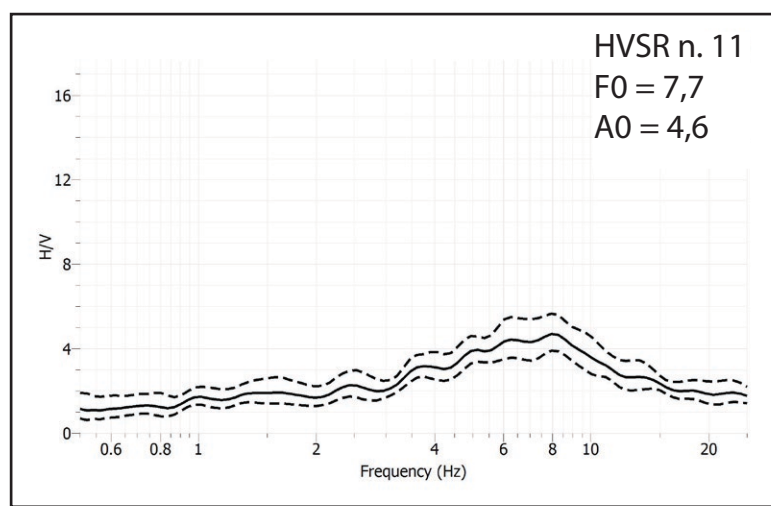
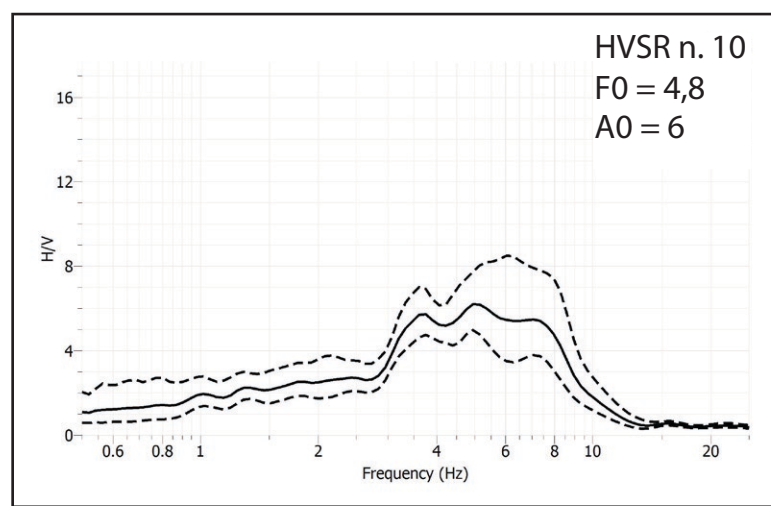
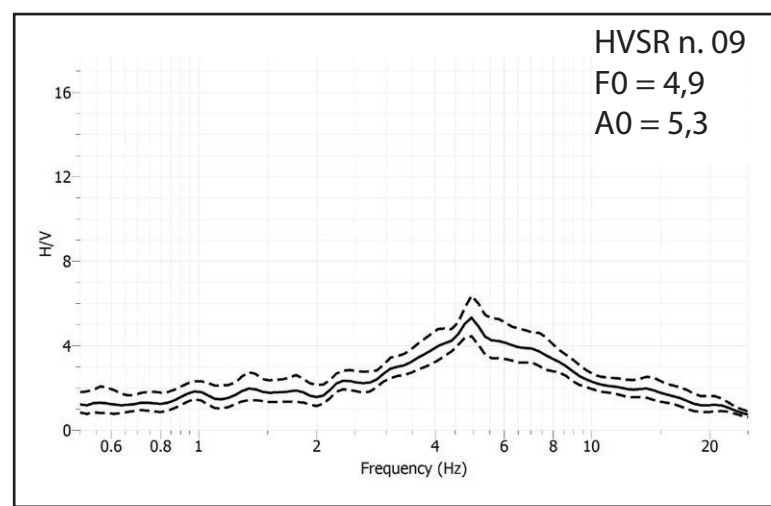
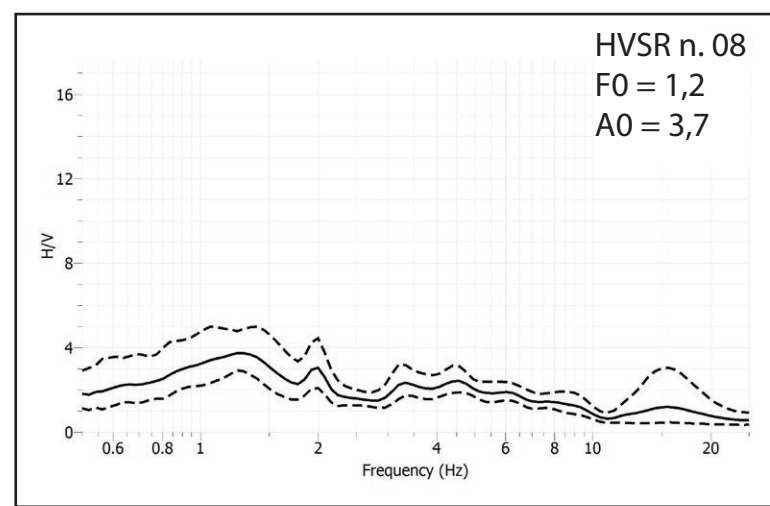
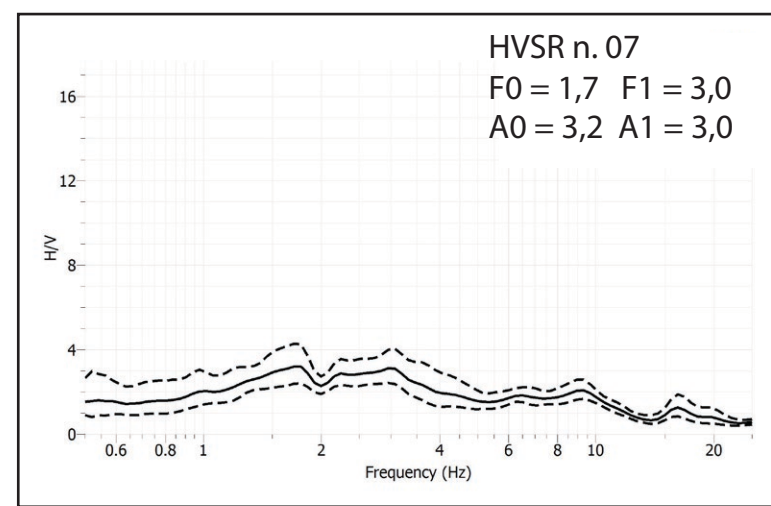
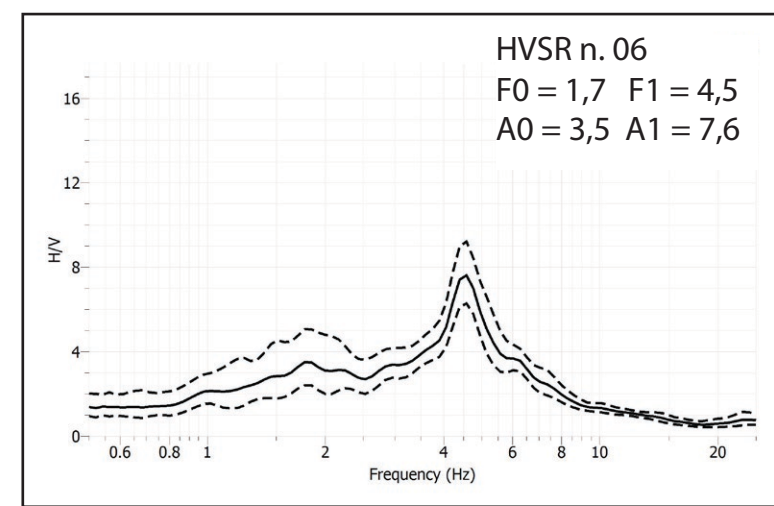
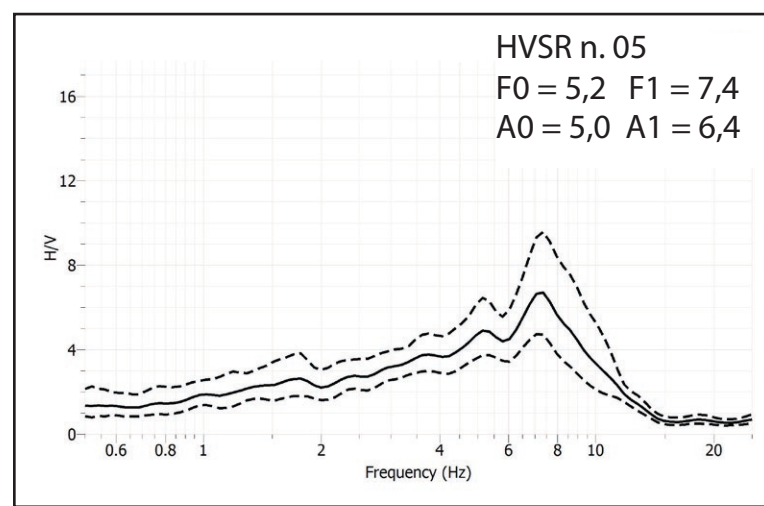
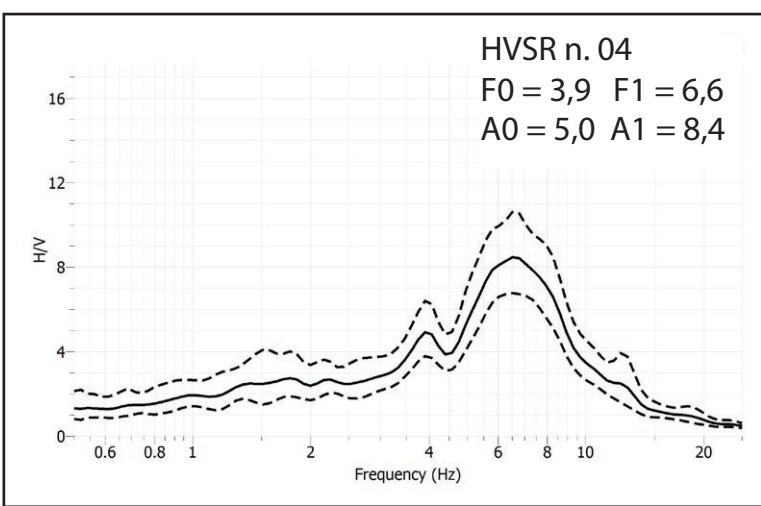
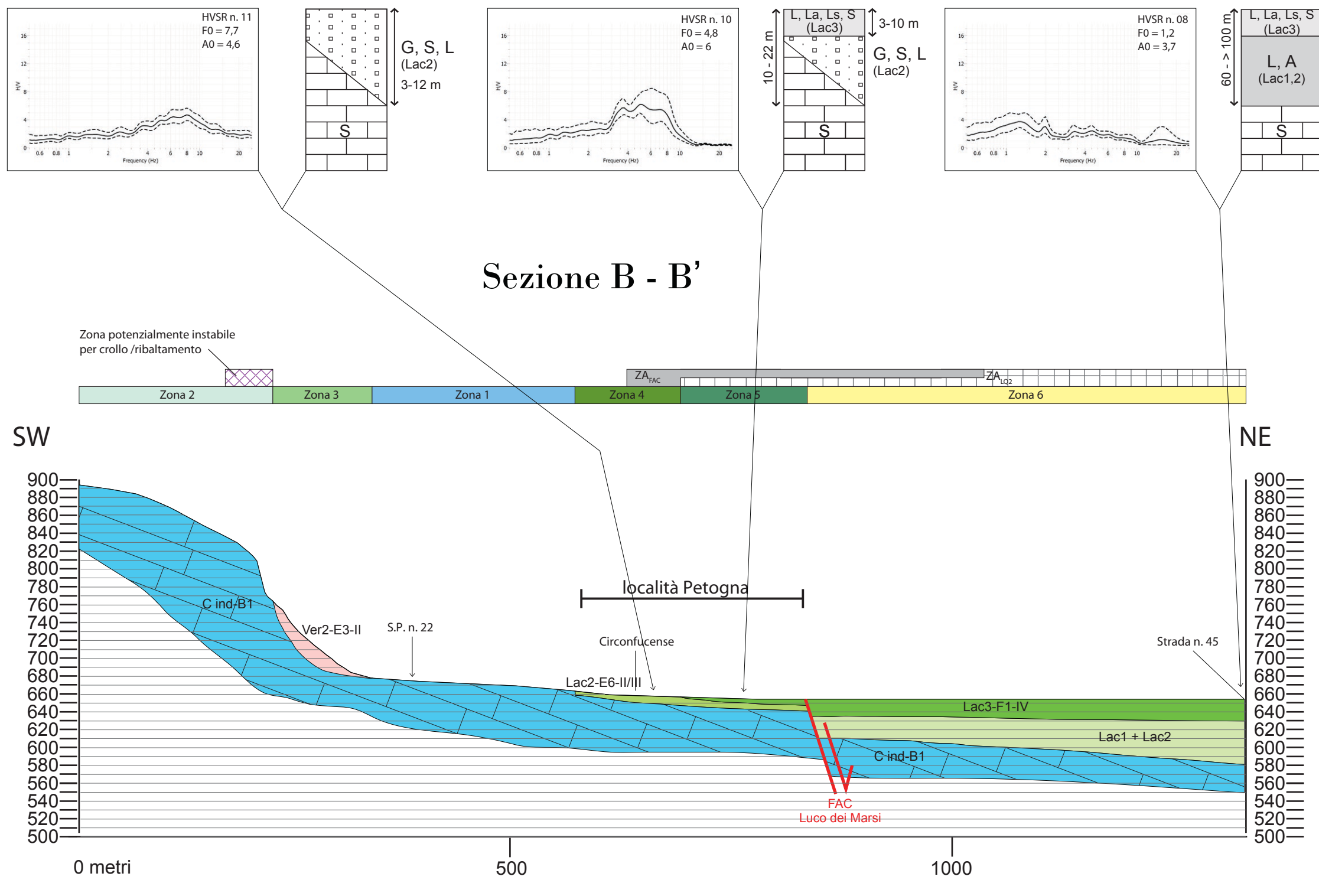
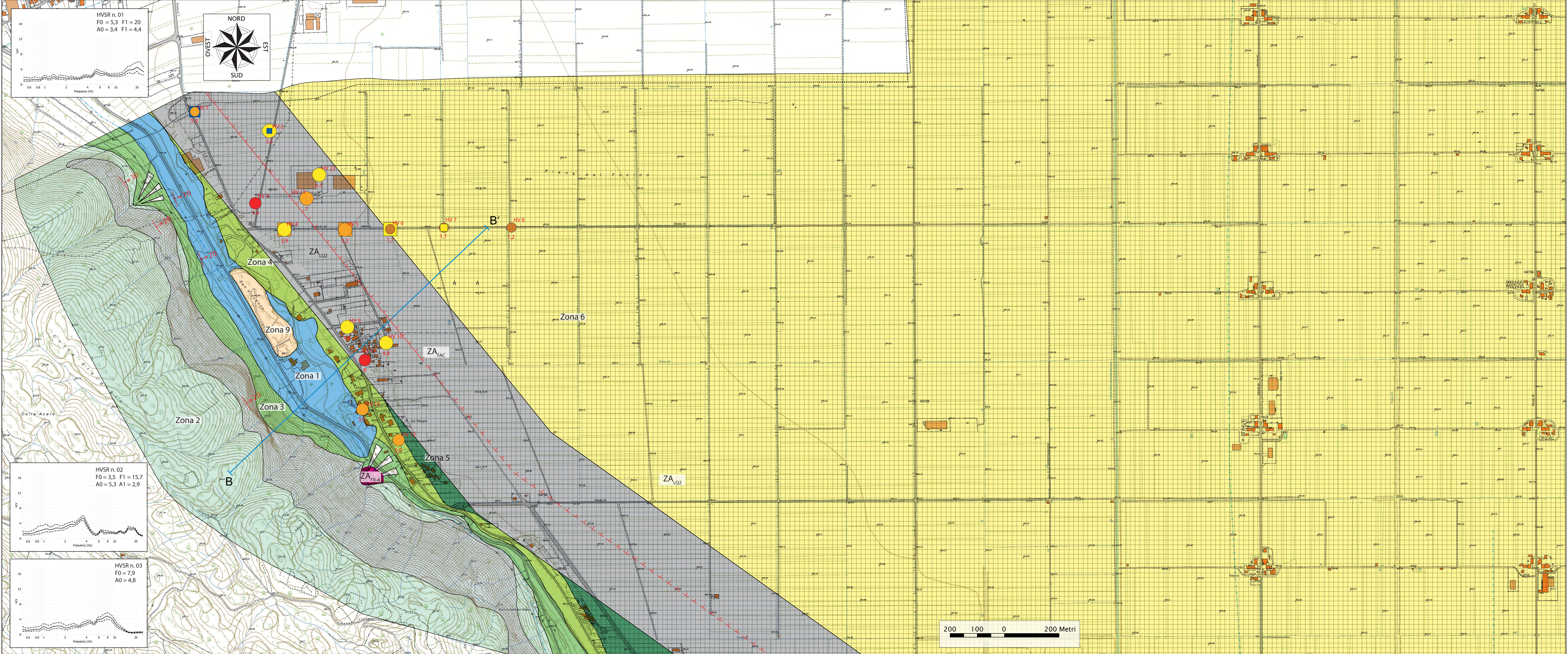
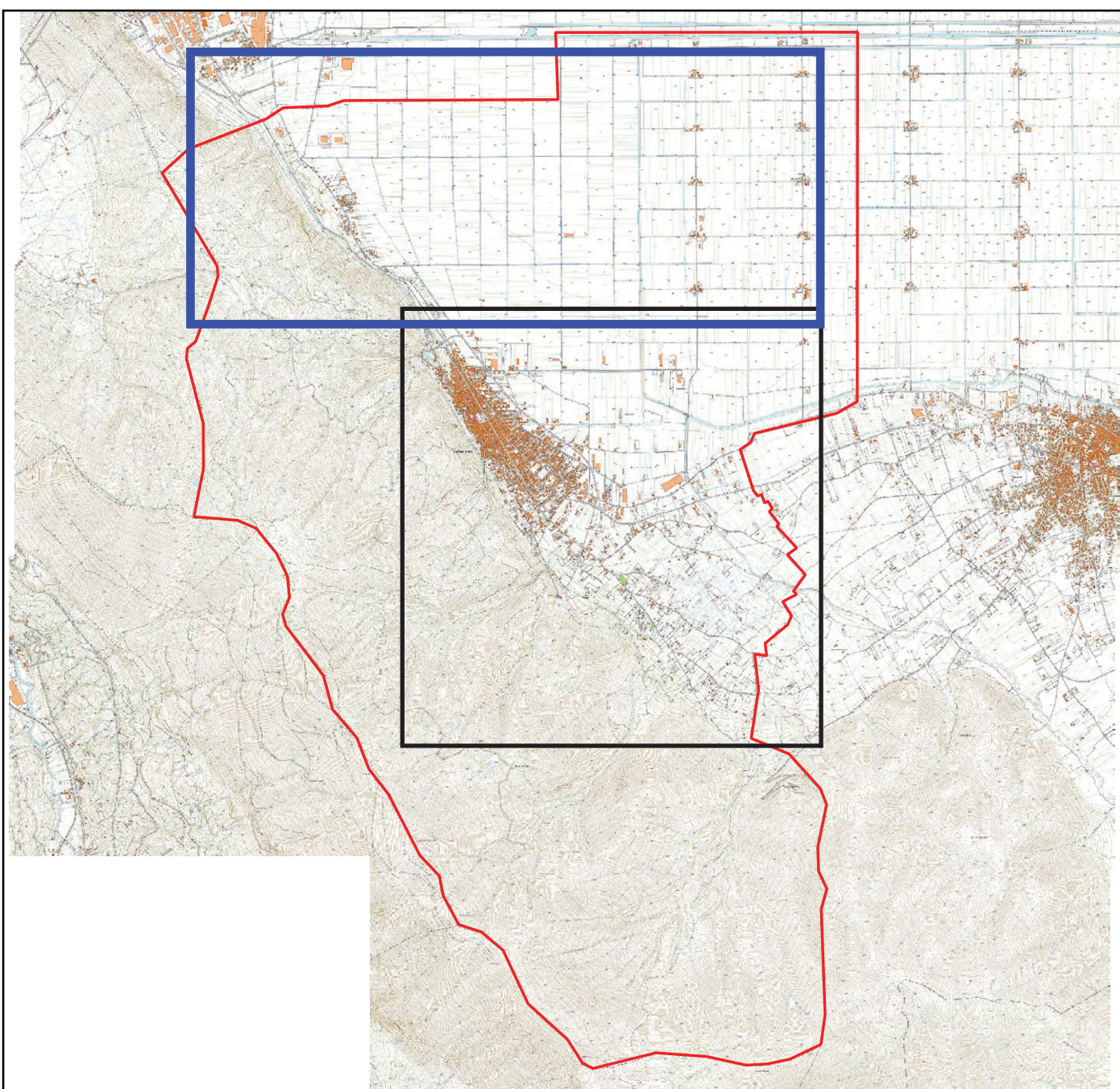
Soggetti Realizzatori

Geol. – ANGELO MONACO

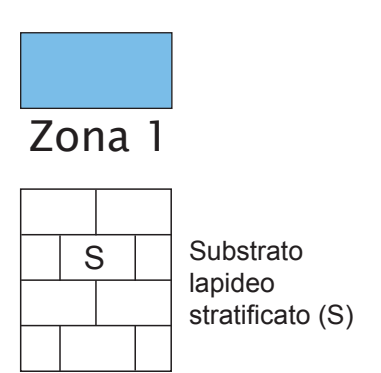
Collaboratore

Geol. – Pino D'Aquila

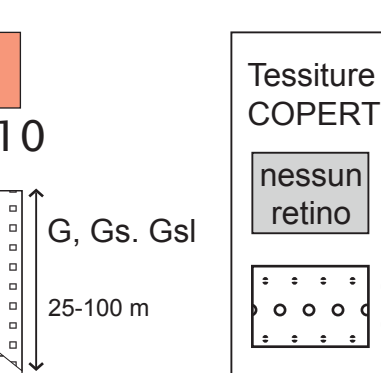
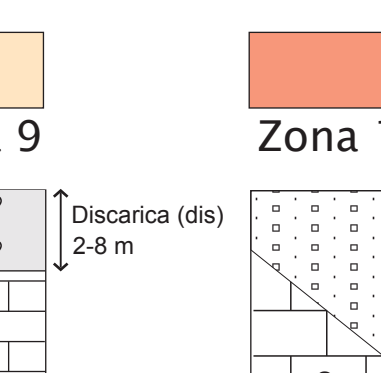
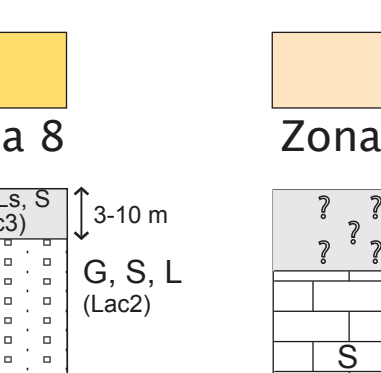
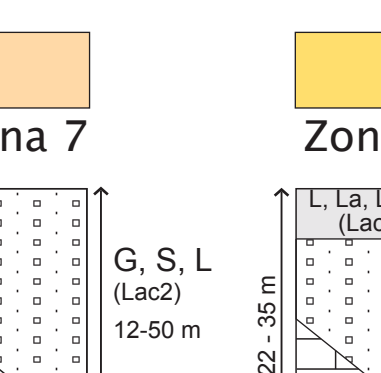
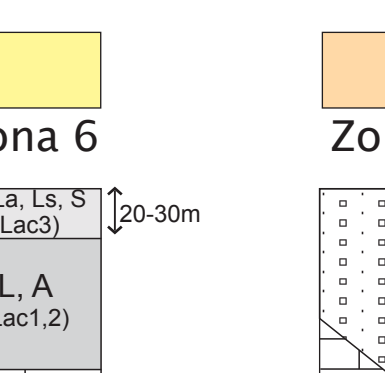
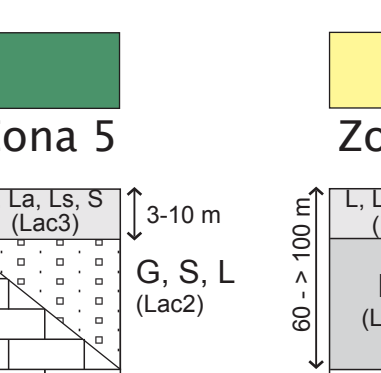
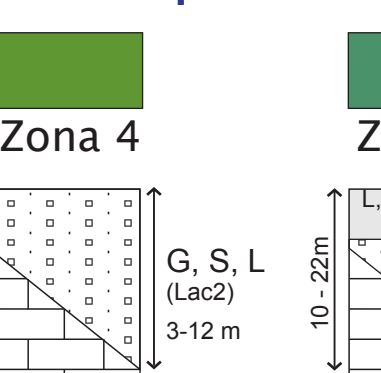
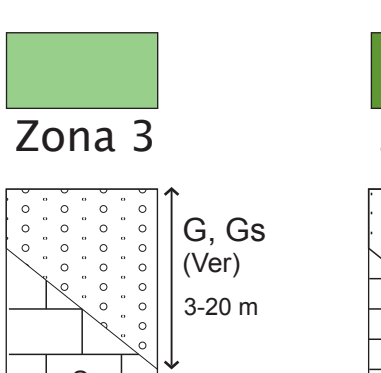
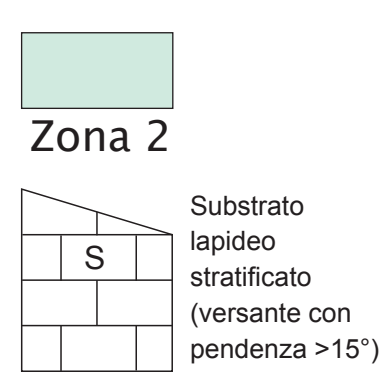
Data



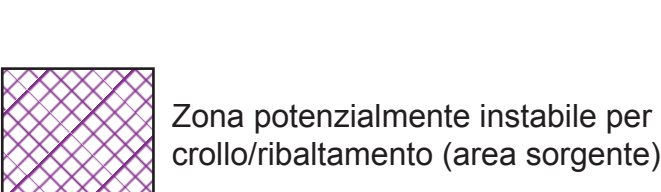
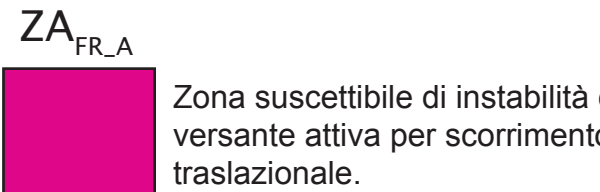
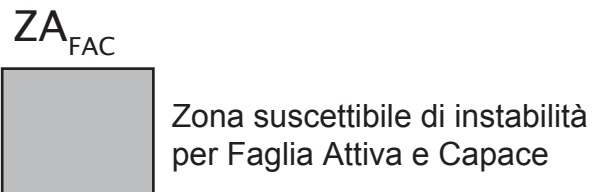
Zone stabili



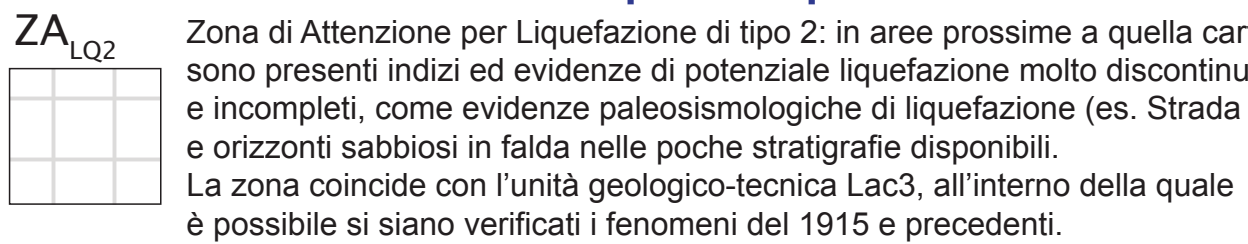
Zone stabili suscettibili di amplificazioni locali



Zone suscettibili di instabilità



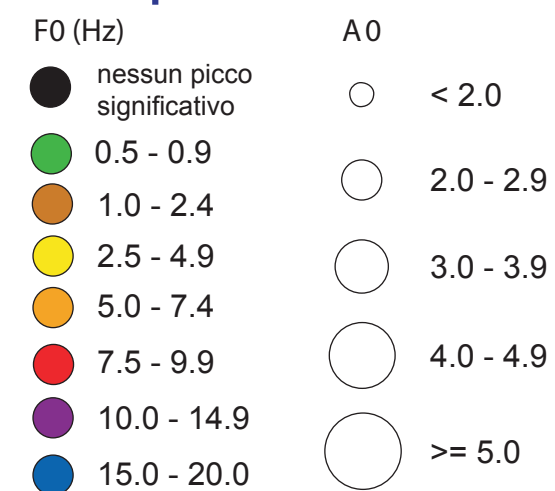
Zone di attenzione per liquefazione



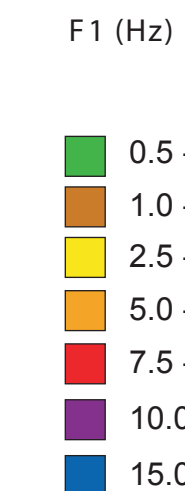
Elementi strutturali



Frequenze di Risonanza



Forme di superficie e sepolte



Altri elementi

